



# ALUKAP®-SS

World leading **self-supporting** system

**High-spanning**, glazing systems



## High-spanning glazing solution

ALUKAP®-SS self-support system has been designed to combine exceptional strength ratios with an excellent and aesthetically pleasing finish.

The simplicity of ALUKAP®-SS reduces installation time without reducing the quality of the finished product. Manufactured almost entirely from aluminium extrusion the ALUKAP®-SS system provides an integrated low-weight high-strength structure.

ALUKAP®-SS accommodates AXIOME® multiwall sheet in almost any thickness including 6mm, 10mm, 16mm, 25mm and 35mm. Additionally the high strength design of ALUKAP®-SS is perfectly suited to single glass and double glazed glass unit options of almost any thickness.



“ Quick to install, we were really happy with the final product, great quality. ”

## Common uses:

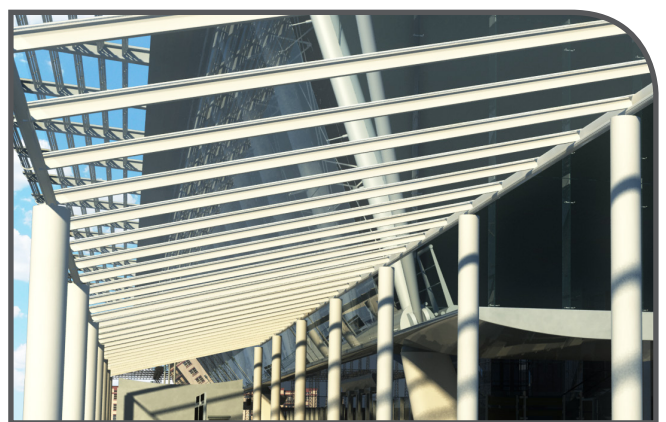
- ✓ Decking and Veranda Covers
- ✓ Covered Walkways
- ✓ Carports
- ✓ Shelters
- ✓ Play Area Covers
- ✓ Conservatories
- ✓ Swimming Pools
- ✓ Lean To's

## Qualities:

- ✓ Excellent Spanning Capabilities
- ✓ No Need for Timber Rafters
- ✓ Fast to Install
- ✓ All Powder-Coated Aluminium for Longevity
- ✓ Maintenance Free
- ✓ Suited to Single Glass, Double Glazed Units and AXIOME® Multiwall

**F**rom Residential Canopies to Commercial Walkways the ALUKAP®-SS System is an increasingly popular solution for any covered area. ALUKAP®-SS is manufactured using all aluminium extrusions which are then coloured with a high quality powder coated finish. This means that choosing ALUKAP®-SS will provide the highest possible longevity for your construction.

For residential use, adding an ALUKAP®-SS canopy to a property can enhance the overall appearance of the Property and with its high quality manufacturing process, it can increase the market value of the Property.





## ALUKAP®-SS : Low Profile Bar



**T**he ALUKAP®-SS Low-Profile bar system is designed typically for shorter span roofs where the distance from the wall to the front posts is around 3m. Some of this decision would depend upon the chosen glazing sheet (AXIOME® multiwall, or glass) and also the location specifics, such as exposure, pitch, expected snowfall etc. The Low Profile ALUKAP®-SS solution is a very cost effective way of creating a canopy, walkway, carport, children's play area, BBQ shelter, or any other covered area.



Low profile bar illustration of the front eaves beam system.



Low profile bar illustration of a wall bar system detailing how it is fixed to the wall.



## ALUKAP®-SS : High Span Bar



**T**he High Span ALUKAP®-SS bar system has unrivalled spanning capabilities of between 4m and 6m, depending on the chosen glazing options, location, bar spacing's etc. This means that canopies can be created with larger areas of space without obstructions of additional posts. The ALUKAP®-SS High Span system also can be glazed with AXIOME® multiwall, single glazed glass or double glazed glass units.



High span illustration of the front eaves beam system.



High span illustration of a wall bar system detailing how it is fixed to the wall.

“ We’re very pleased that we can create an excellent size canopy with great aesthetics. ”



## ALUKAP®-SS : Eaves Beam

The **ALUKAP®-SS Eaves Beam** provides a variable pitch solution to suit a wide range of required pitches. Manufactured using high quality powder-coated aluminium profiles this beam is designed with strength, aesthetics and longevity in mind.

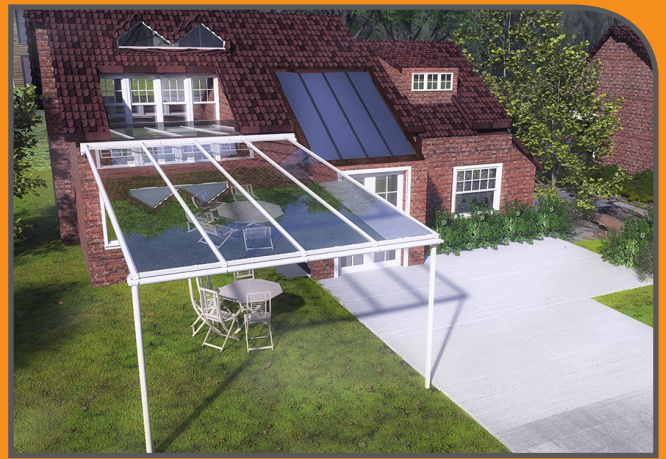
There is an optional ALUKAP®-SS Cap for structures where draft and wind proofing are essential, however where the structure is open there is a cost saving to be made by omitting the ALUKAP®-SS Cap.

The intersecting ALUKAP®-SS bars simply bolt in to the ALUKAP®-SS Eaves Beam with M6 stainless steel bolts provided, and the cover strip clicks in to place concealing the fixing points. The ALUKAP®-SS Eaves Beam also provides an installer-friendly Deep Flow QUADRAFLOW® Gutter bracket locator to increase speed and accuracy during installation.

## ALUKAP®-SS : Wall Plate

Using the same profile as the ALUKAP®-SS Eaves Beam, the **ALUKAP®-SS Wall Plate** can be bolted to a wall or similar structure to provide a robust and straight wall plate to glaze from. As with the Eaves Beam the ALUKAP®-SS Wall Plate has an optional ALUKAP®-SS Cap for structures where draft and wind proofing are essential.

The ALUKAP®-SS Wall Plate is designed to work with glazing pitches from 2.5 to 25 degrees.



“Great system! –  
We create covered  
areas for Children’s  
play areas.”



Example of a wall plate fixed to a wall.



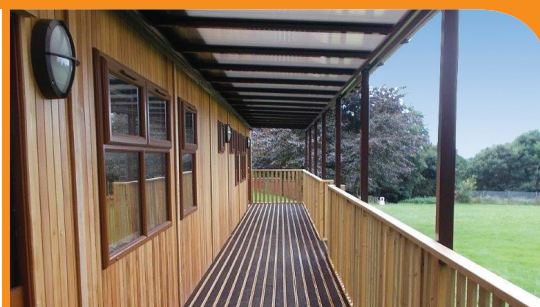






## Distributors details:

World leading self-supporting system



## WARNING : REGISTERED DESIGNS & PATENTS

The IP of the designs in this brochure are protected by internationally registered design rights. Many products are also protected with active or pending Patents. Clear Amber will not hesitate to take appropriate legal action if its rights in this respect are infringed.

© Copyright – Clear Amber Group Ltd – March 2019. No part of this publication may be copied, reproduced, scanned, or stored in any electronic database, whether in whole or in part, in any form or by any means, without permission in writing from Clear Amber. Clear Amber will not hesitate to take appropriate legal action if its rights in this respect are infringed.

Inasmuch as Clear Amber have no control over the circumstances in which our material may be used, or site specific parameters, we cannot guarantee that any particular results will be achieved. Users should carry out their own tests to determine the suitability of the material for their application. Installers should satisfy themselves that published permissible loadings and bar spacings for ALUKAP®-SS structures, together with any supporting posts, frames, or walls and fixings, are sufficient to provide adequate strength for the intended use and to meet regional loading requirements. Installers should also obtain their own job-specific structural engineer's report for their individual site. Samples are readily available to users to test and verify the exact sizes according to their site requirements.