

# Evolution Canopy System 6mm Glass/Solid Polycarbonate Installation Guide

## Tools Required:

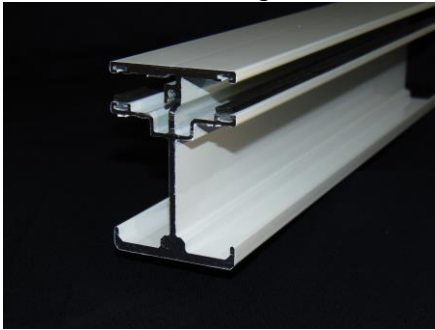
Power Drill/Driver, HSS Drill Bits – 3mm/7mm/8mm, Masonry Drill Bits – 6mm/8mm, Silicone Gun, Spirit Level, Mallet & Hammer, Step Ladders

## Items Supplied:

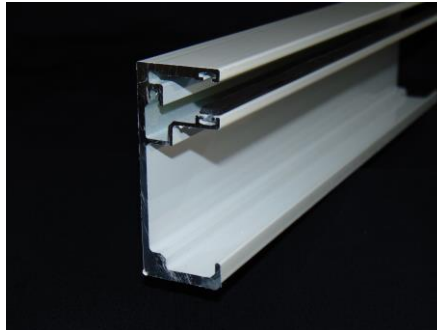
Star Drive Bit, Posi Drive Bit, Silicone Sealant, Fixings, GutterGrid

## Canopy Components

6mm Glazing Bar



6mm End Bar



Wall Plate



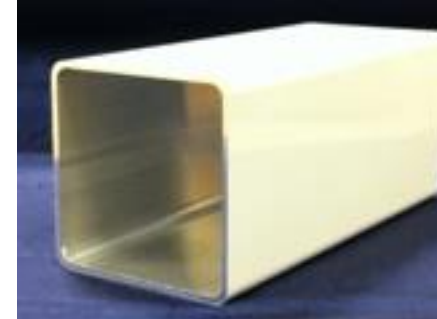
Eaves Beam/Gutter



Glass Trim and Stop

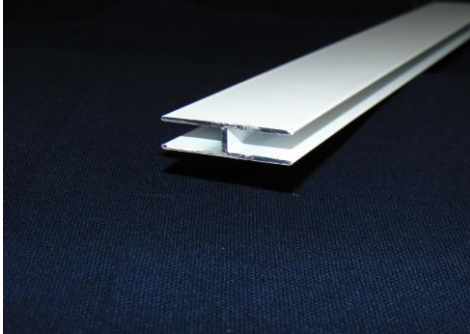


Canopy Post (Leg)



## Evolution Canopy System 6mm Glass/Solid Polycarbonate Installation Guide

**6mm Munting Bar**



**Glass Stop Gasket**



**Glazing Bar Base and Wedge Gasket**



Prior to Installation, please ensure the following conditions have been met:

- The host wall and base should be made of a sound construction, suitable for fixing this system into position.
- Base for canopy posts should be of a solid concrete construction
- Fixings provided must be checked for suitability to your application before proceeding with installation.
- We recommend the canopy is installed by two people due to the size and weight of certain components.

## Evolution Canopy System 6mm Glass/Solid Polycarbonate Installation Guide

### Step 1.0 Eaves Beam/Gutter preparation

Apply a bead of silicone sealant to the edge of the eaves/beam gutter.



### Step 1.2 Eaves Beam/Gutter preparation

Once the end caps are fitted, apply another bead of silicone to the inside edge



### Step 1.4 Eaves Beam/Gutter preparation

To ensure leaves and debris do not block the water outlet, install a small section of gutter grid as per diagram. This can be fixed into position using a small bead of silicone if required.



### Step 2.0 Wall Plate Preparation

Determine the pitch required using the table provided on **page 5**, then measure and mark the host wall at the correct height.

**NB all measurements shown are the height to underside of the wall plate**

**NB the dimensions are for standard 2.25m posts. For 3m posts add 750mm to the dimensions.**

### Step 1.1 Eaves Beam/Gutter preparation

Fix the end cap to the end of the eaves/beam gutter using the self tapping screws and cover cap provided. Wipe off excess silicone from outside edge.

**NB do not fit screw "X" as this is fitted later.**



### Step 1.3 Eaves Beam/Gutter preparation

Determine and mark the position of the post legs on the underside of the eaves/beam gutter. Select the drainage post/s and drill a central 40mm hole. **NB. Alternatively a series of small holes can be drilled in a circular pattern to achieve the same result.**



### Step 1.5 Eaves Beam/Gutter preparation

Once the pilot hole has been drilled permanently fix post/s into position using two self tapping screws per side. Ensure legs are square to eaves beam before screws are fitted.



### Step 2.1 Wall Plate Preparation

Using a 7mm HSS drill bit pre-drill the wall plate 100mm from the edge. Equally space the remaining fixing points along the wall plate and drill. We recommend minimum one fixing per glazing bar along the wall plate.



## Evolution Canopy System 6mm Glass/Solid Polycarbonate Installation Guide

### Step 2.2 Wall Plate Preparation

Apply a bead of silicone to the back of the wall plate. Offer up the wall plate to the wall and drill and fix the first hole into the wall using the 6mm masonry bit and fixings provided. **NB fixings supplied are to be fixed into the brickwork with no plug. Do not fix into mortar joint.**



### Step 2.3 Wall Plate Preparation

Ensure the wall plate is level and fit remaining fixings and cover caps. Apply a bead of silicone to the top edge of the wall plate to form a watertight seal.



### Step 3.0 Erecting The Canopy

The two edge bar profiles are to be fixed onto the wall plate and eaves beam using the self tapping screws provided. Use one screw at either end of the bar at this point to allow movement for squaring up later in the procedure.



### Step 3.1 Erecting The Canopy

The drill guide lines on the underside of the wall plate and eaves beam denote the degree of pitch, reading from the host wall from 5 through to 20 degrees. (5 degree wall plate fixing shown opposite). **The correct selection of angle is vital to the installation. 10 degrees is recommended for glass**



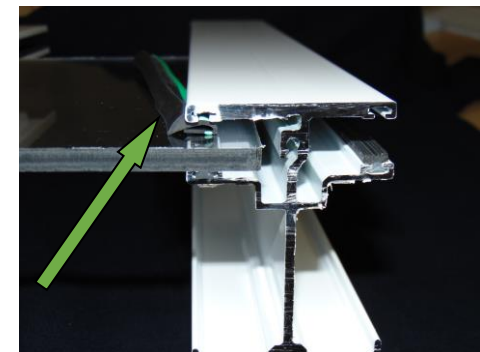
### Step 3.2 Erecting The Canopy

Fit the aluminium munting bar to the wall plate end of the glass/solid polycarbonate panel.



### Step 3.3 Erecting The Canopy

Engage the edge of the first glass/ solid polycarbonate panel into the glazing jaw on the edge bar and push the panel in firmly. Then select a glazing bar and engage the panel into the glazing jaw. Ensure the bar is then fully engaged into the wall plate. Wedge gasket should be fitted after each panel is in place (see arrow). **NB do not secure/screw any of the glazing bars at this point.**



## Evolution Canopy System 6mm Glass/Solid Polycarbonate Installation Guide

### Step 3.4 Erecting The Canopy

This photograph shows how the canopy should look from underneath – looking back towards the wall plate. Note the munting bar in place at the rear of the glazing and pushed back flush with wall plate (see arrow). Repeat the bar fitting procedure with all the remaining panels and glazing bars until one panel remains. Now remove the edge bar to allow access of the last panel and then refit. Structure now needs to be squared up. Now secure all glazing bars using two screws at both ends of each bar.



### Step 4.0 Fixing Posts

Once the structure is square, level the posts in both directions using a spirit level. Drill the concrete pad using an 8mm masonry bit and fix post brackets to the concrete base using the stud anchors supplied.



### Step 4.1 Fixing Posts

Hammer in fixings and tighten with a 13mm spanner. Check fixings are secure for your base.



### Step 4.2 Fixing Posts

Level the gutter by adjusting the post over the foot bracket. Once the desired position is achieved, secure using two screws & caps either side of the post.

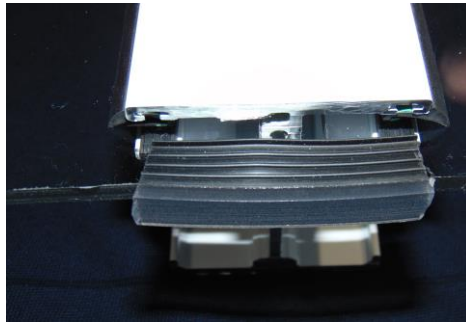




## Evolution Canopy System 6mm Glass/Solid Polycarbonate Installation Guide

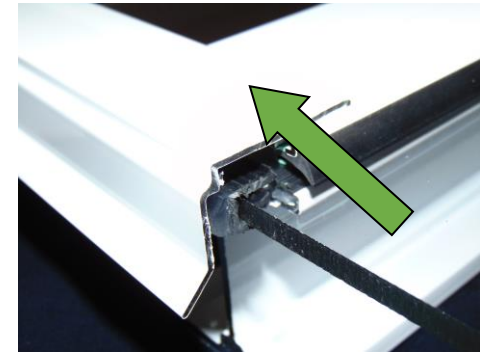
### Step 5.0 Fitting glass stop trim and gasket

Fitted correctly the glazing should be projecting into the gutter – approx 10mm past the end of the glazing bar. Fit the glass stop gasket onto the glazing at the end of each bar.



### Step 5.1 Fitting glass stop trim and gasket

Position the sheet edge trim profile on top of the glazing bar. The trim should be fitted tight up against the glass stop gasket wherever they meet, all the way along. The trim should be fixed down by using screw and caps provided and a bead of silicone applied where the cap sits on top of the bars. Use the central sight line (see arrow) on the glazing bars to determine drill position.



### Step 5.2 Fitting Edge Trim

Use one screw per end bar and one per glazing bar. A small amount of sealant on top of each screw head is also recommended.



### Step 5.3 Fitting Sheet Edge Trim

Apply a bead of silicone in front of the edge trim over the glazing bar – **note on the glass canopy there is only one screw positioned centrally on the glazing bar.** Fix screw "X" into position (see step 1.1) and fit wall plate end caps.

***This now completes the installation of the canopy.***

## Evolution Canopy System 6mm Glass/Solid Polycarbonate Installation Guide

### Wall plate preparation table

Pitch (degs)	Projection	1500mm	2000mm	2500mm	3000mm	3500mm	4000mm
10		2543mm	2630mm	2717mm	2804mm	2890mm	2977mm
15		2665mm	2795mm	2924mm	3054mm	3183mm	3312mm
20		2784mm	2955mm	3126mm	3297mm	3468mm	3639mm

*Based upon standard 2.25m post lengths and including 20mm for foot brackets. Add 750mm for the 3m post upgrade where applicable.*

### Disclaimer

*The manufacturer accepts no responsibility for any injury or consequential losses caused by the use of unsuitable fixings or by installation of the product in any way that differs from that described herein. Evolution canopies are designed to withstand a loading of 600 N/m<sup>2</sup> which is suitable for most domestic applications in the United Kingdom. If you are installing the canopy in an exposed location please call your supplier to ask about increased loading specifications.*

Please refer to [www.molan-uk.com](http://www.molan-uk.com) for a downloadable colour version of the fitting instructions.

